

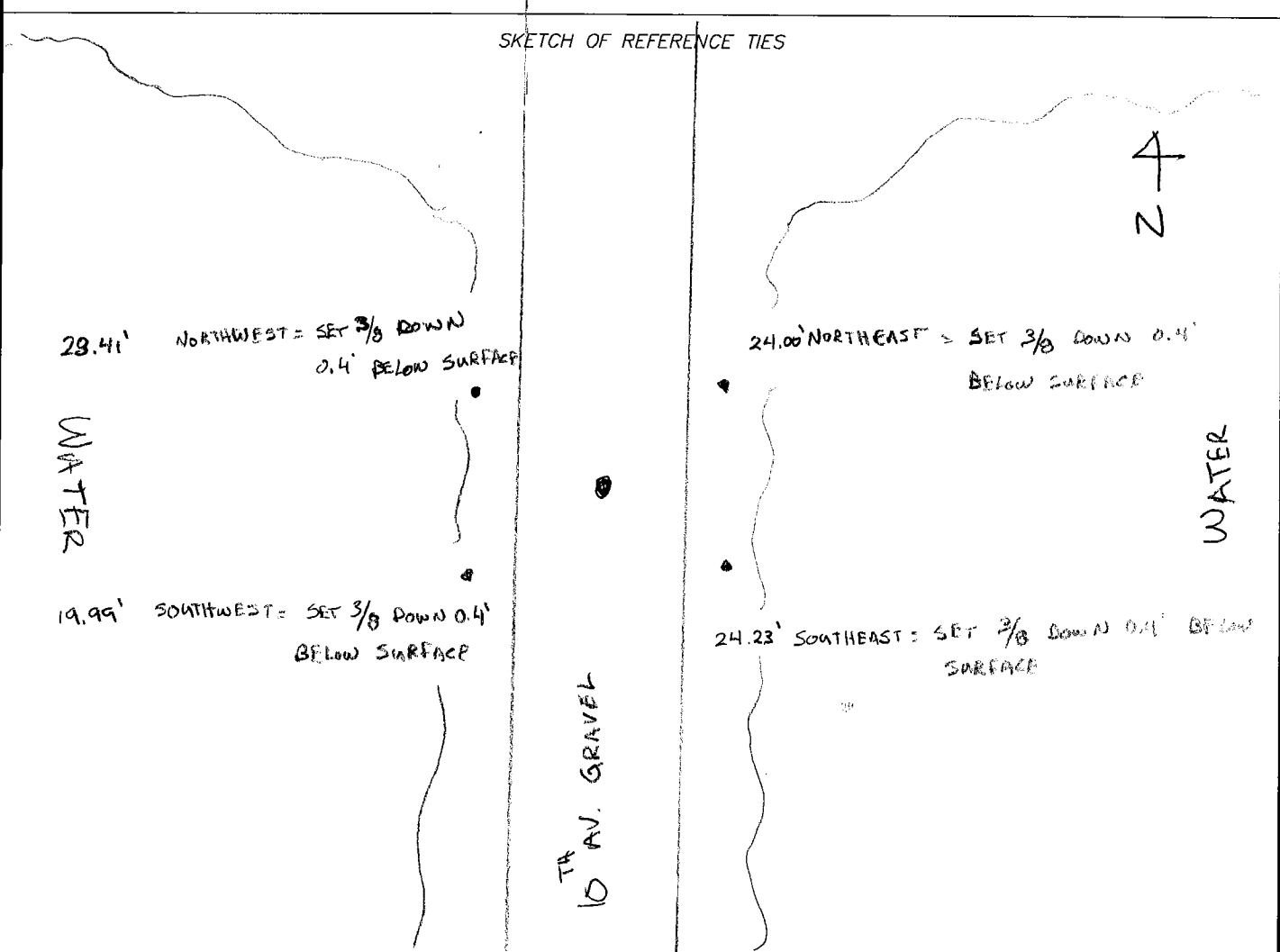
CERTIFICATE OF LOCATION OF GOVERNMENT CORNER

EAST QUARTER Corner of Section 30, Township 108 N, Range 43 W, 5th P.M.
 STATE OF MINNESOTA, County of Murray

At the corner location shown on the sketch:

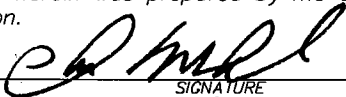
- On _____ found a _____
DATE
- left monument as found, lowered monument, removed monument (explain)
- On 7/26/07 placed a 3/8 CAPPIA REBAR #40853 DOWN 0.2' BELOW SURFACE
DATE

SKETCH OF REFERENCE TIES



Statement of evidence relative to this corner location is on back of page.

I hereby certify that this document and the data contained herein was prepared by me or under my direct supervision.


SIGNATURE

Registration No. 40853

- Land Surveyor, Professional Engineer
 County Surveyor, County Engineer

OFFICE OF THE COUNTY RECORDER
 County of _____

I hereby certify that this document was filed in the Co. Recorders office at _____ .M. on the _____ day of _____ A.D., 20____

County Recorder _____
 By _____, Deputy
 DOCUMENT NO. _____

Statement of Evidence (E. ¼ cor. Sec. 30, Twp. 108, Rge. 43)

On July 26, 2007, Westwood Professional Services excavated with a backhoe and found no evidence. A 3/8 inch capped rebar was set (PLS 40853) 0.2 feet below grade midway and online from the northeast corner to the southeast corner of the section. The total measured distance from the northeast corner to the southeast corner was 5300.25 feet.